

design and print
print
mint
01903 208408

These mapping documents are available on:

www.countec.org/seef

They are subject to constant revision and comments
are welcomed to improve and update them.

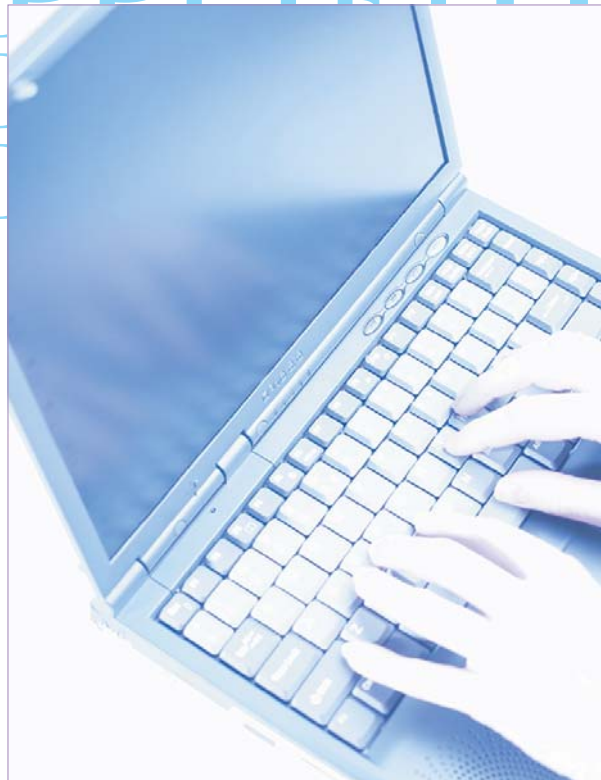
Most recent versions will be available from the website.

All comments should be sent to:

view@countec.org



APPLIED GCSE
APPLIED GCSE
APPLIED GCSE
APPLIED GCSE
APPLIED GCSE
APPLIED GCSE
APPLIED GCSE
APPLIED GCSE
APPLIED GCSE
APPLIED GCSE
APPLIED GCSE
APPLIED GCSE
APPLIED GCSE
APPLIED GCSE



*links to
business*



INFORMATION & COMPUTER TECHNOLOGY

DOUBLE AWARD

Produced by Countec on behalf of South East Education Business Link Forum (SEEF)
with support from the Government Office of the South East on behalf of the DfES.